

QuelStop Fire Batt is a coated mineral wool board used to reinstate the fire rating of wall and floor constructions where they have been penetrated by services.



QuelStop Fire Batt



QuelStop Fire Batt used in conjunction with QuelStop Intumescent Acrylic Sealant

FEATURES & BENEFITS

- Up to 2 hour fire rating
- Suitable for use in flexible walls, rigid walls and floors
- Suitable for use around cables, cable bunches, cable trays, cable ladders and non-combustible pipes
- Also suitable for use around plastic pipes and insulated non-combustible pipes with the addition of other Quelfire products
- Can be used as a blank seal as a head of wall detail

STANDARDS & APPROVALS

- Fire resistance testing to BS EN 1366-3:2009
- EI30, EI90, EI120
- Classified to EN 13501-2: 2007 + A1: 2009
- Acoustic tested to EN 10140 to 48dB



APPLICATION

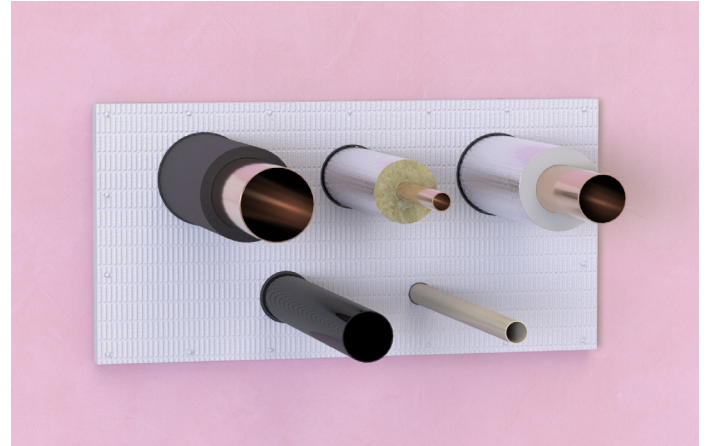
QuelStop Fire Batts are cut and friction fitted into the aperture with all edges and cuts sealed with the QuelStop Intumescent Acrylic Sealant. All surfaces must be clean and free of any bond breaking contamination prior to application of the QuelStop Fire Batt and QuelStop Acrylic Sealant.

QuelStop Fire Batts are 50mm thick and supplied in overall dimensions 1200 x 600mm with a density of 140kg/m³.

Additional products, including the QuelStop HPE Sealant, the QuelCoil Continuous Intuwrap and the QWR CE Marked Fire Collars should be used in conjunction with the QuelStop Fire Batt depending on the type of penetrating services. Refer to the relevant product datasheet(s) for more information on these products.



QuelStop Fire Batt used in conjunction with QuelStop HPE Intumescent Graphite Sealant



Pattress fitted QuelStop Fire Batt used in conjunction with QuelCoil Continuous Intuwrap

INSTALLATION WITHIN THE FLOOR OR WALL APERTURE:

Ensure that the QuelStop Fire Batt is friction fitted within the aperture and coat all joints and interfaces of the QuelStop Fire Batt using QuelStop Intumescent Acrylic Sealant. Then finish off the edges with a bead of QuelStop Intumescent Acrylic Sealant to create a seal.

SAMPLE SPECIFICATION

Install QuelStop Fire Batt to provide up to 2 hours fire protection where compartment walls and floors have been penetrated by services. Installation to be in accordance with manufacturer's instructions.

TECHNICAL SUPPORT & GUIDANCE

Should you require any further information regarding this product, please don't hesitate to contact one of our specialists.

INSTALLATION - PATTRESS FIT TO WALLS:

Ensure that you install the QuelStop Fire Batt with at least 75mm overlap and fix it to the substrate with the minimum 80mm steel screws and penny washers at maximum 300mm centres overcoated with QuelStop Coating. Coat all joints using QuelStop Intumescent Acrylic Sealant and ensure all leading edges of the QuelStop Fire Batt are coated with QuelStop Intumescent Acrylic Sealant.



QuelStop Fire Batt used in conjunction with QuelStop HPE Intumescent Graphite Sealant around the pipes